

# BUSES



**SOLAR INTEGRATION**

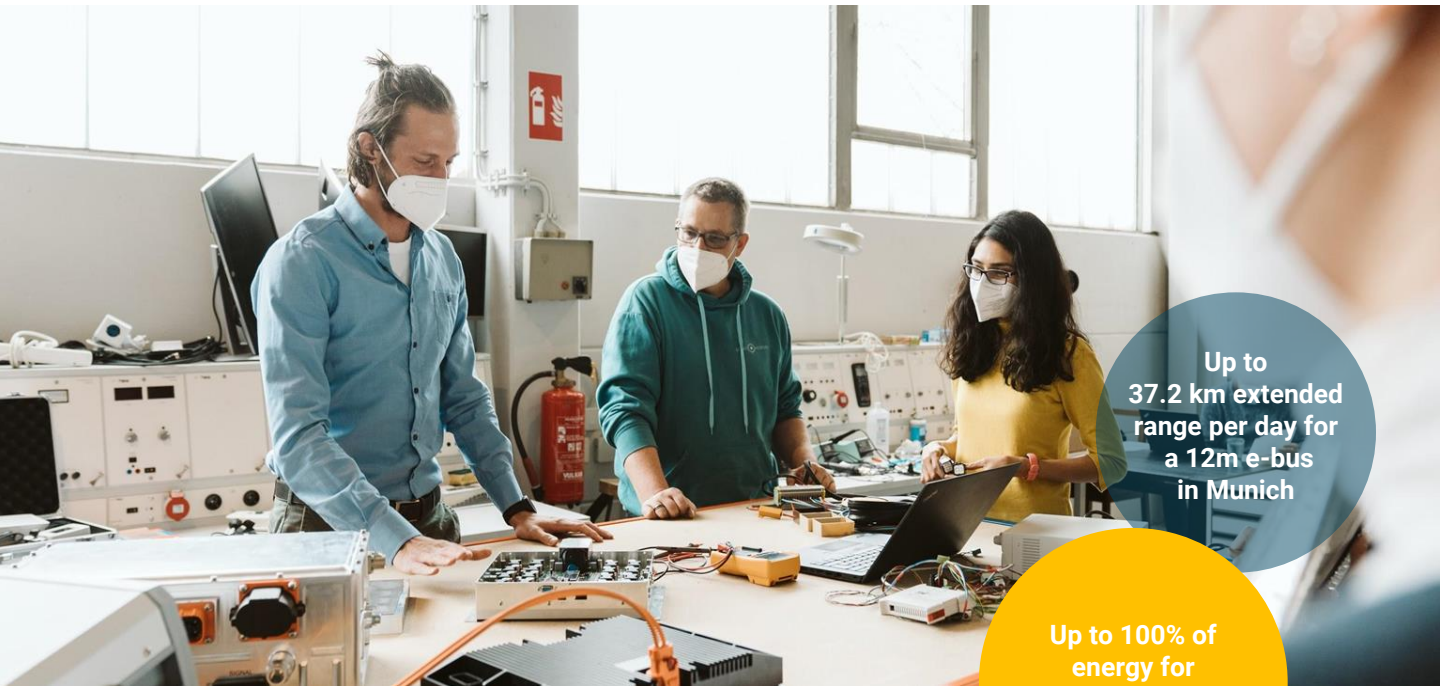
Info Sheet

**SONO SOLAR**

# Significant Potential of Solar Integration for Diesel & Electric Buses

Solar Integration Addresses the Current Industry Challenges:

- Range and charging limitations for electric buses
- Increasing energy prices for both power from the grid and diesel
- Regulation and standards on emissions for diesel buses
- Limits on urban pollution



Up to  
37.2 km extended  
range per day for  
a 12m e-bus  
in Munich

Up to 100% of  
energy for  
HVAC covered  
via solar

**BENEFITS OF SOLAR INTEGRATION:****REDUCED COSTS**

of energy compared to power from the grid or diesel, thereby reduced TCO.

**SUSTAINABLE**

solar energy for reduced urban emissions and extended battery lifetime.

**EFFICIENT**

for extended range, longer operating hours, fewer charging cycles, and solar-powered HVAC.

**SONO SOLAR**

# One-Stop Shop for Solar-Integration

**HIGH ENERGY EARNINGS**

For a 12m bus  
Sides & roof: 16 kWh / day\*  
\*under peak conditions in Munich

**LIGHT-WEIGHT**

4-6 kg per sqm,  
with further reductions planned

**THIN SOLUTION**

~ 4 mm PV panels

**UNIQUE EXPERTISE**

both in automotive and photovoltaics

**INTELLIGENT POWER ELECTRONICS**

for best-in-class energy yields

**CUSTOMIZED INTEGRATION**

with a range of PV applications



**Sono Solar is a one-stop shop for transforming your vehicles into solar electric vehicles via the combination of our innovative technology and expertise.**

We offer a complete solution, and we partner with you from a first-step prototype, to series production and after-sales service.

- Solar Panels
- Power Electronics
- Telematics & Data Service
- Hardware Integration
- After-Sales Service

**ol|jo** 2018  
preisträger deutscher mobilitätspreis

**N** FUTURE 50



## ABOUT SONO MOTORS

Sono Motors is revolutionizing the future of transportation with the development of the first solar electric vehicle for the masses – the Sion. Led by our vision of a world without fossil fuels, we want to become a leading solar EV developer. Sono Motors' proprietary Solar integration is powering the transition of mobility and commercial transportation to a sustainable future.

---

### SONO MOTORS GMBH

Waldmeisterstrasse 76  
80935 Munich | Germany  
T +49 (0)89 45 205 818

**E** [solar-integration@sonomotors.com](mailto:solar-integration@sonomotors.com)

**W** [sonomotors.com/solar-integration](https://sonomotors.com/solar-integration)

**VAT** DE305560734

District Court Munich HRB 224131

Managing Directors: Laurin Hahn & Jona Christians

© Sono Motors 2021