

# Solar Bus Kit

SONO  MOTORS

Saves up to  
**1250 l Diesel**  
and **3,3 t CO<sub>2</sub>** or  
**2,1 MWh power**  
**earnings** per  
bus per year



Equipment of Diesel, Hybrid and e-Buses



Available on 3 standard sizes for City, Coach and Mini buses



Unique architecture makes it the most efficient solution in the market



Direct supply of electrical consumers and battery discharge protection

*\*Kit size customization is possible upon request*

## SYSTEM BENEFITS IN A NUTSHELL

### Cost savings

- From fuel or electricity for boardnet consumers
- From maintenance and replacement of 24V batteries



### Comfort

- Power for ventilation, fridge, coffee machine, etc., with engine off
- Reduced noise and vibration
- Boosts battery reliability



### Sustainability

- Diesel and CO<sub>2</sub> savings
- Enhanced battery life
- Power generated where it's needed
- Reduction of emissions in cities and for travel use



### Marketing

- Public attention through innovative technology
- Sustainable public transport and environmentally friendly travel - a clear competitive advantage





# FEATURES AND INCLUDED COMPONENTS



**Up to 1,4 kWp of power through high-efficiency, flexible SILICON SOLAR PANELS** (up to 16) deliver cost-free green energy.



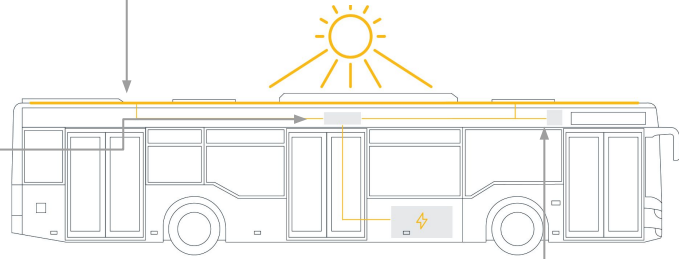
**SOLAR CHARGE CONTROLLER** with 8 channels developed by Sono Motors efficiently delivers solar energy to the 24V vehicle battery, directly powering bordnet electric consumers.



**TELEMATIC DEVICE** delivers performance data, including solar output and battery health, displayed by a **DATA DASHBOARD** available on mobile and laptop.



**CABLING** from solar panels to the 24V vehicle battery, including all necessary **INSTALLATION MATERIAL**.



**INSTALLATION** by customer or through Sono Motors expert Service-partner Network



## WHY SONO MOTORS KITS?

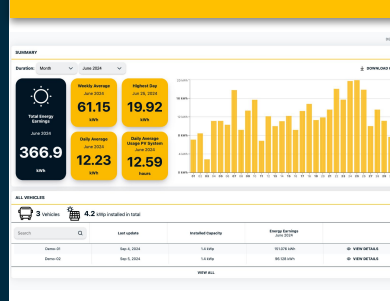
- Sono systems achieve the highest solar yield through multichannel MPPT\* architecture and parallel connection
- Sono charge controller responds most efficiently to rapidly changing sunlight
- Sono charging algorithm delivers power to the onboard grid and battery with outstanding efficiency
- Safe low voltage (<60V) across all states; no high-voltage certification needed
- Small module sizes enable flexible compatibility with different roof layouts
- System weight lower than 55 kg
- ECE R 10 compatible
- Fast installation time
- System performance guarantee of >80% after 10 years.

Installation on Mercedes Citaro C2



Data Dashboard

Charge controller under the roof



## CONTACT

**Edin Kulasic**  
Sales Manager

E [edin.kulasic@sonomotors.com](mailto:edin.kulasic@sonomotors.com)

P +49 176 15686961



\*Maximum Power Point Tracking